

IESNA TEXAS CAPITAL SECTION

NEWSLETTER

10/3/2006 Issue-06: 2

Join us for a meeting presented by : Asha Hegde-Niezgoda, Ph.D., LC

Topic: Light, Color and the Aging Eye

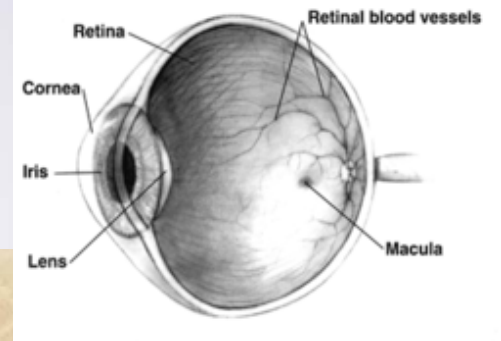
When: Wednesday, October 18, 1130am

Where: Joe's Crabshack, 600 E.Riverside Drive, Austin, TX (512)441-1010

Cost: \$20/non-members, \$15/members

Asha Hegde, has devoted the past 18 years teaching, researching and recently designing lighting in interior environments. Currently, she is an Assistant Professor of Interior Design and Lighting Design at Texas State University, San Marcos, TX. She also has her lighting design and education practice where she conducts and presents continuing education seminars to architects; and interior designers on the topic of light and color across the nation. She has a BS in Interior Design from Florida State University and a MS and Ph.D., in Human Environmental Sciences with an emphasis in lighting from Oklahoma State University. She has over 25-referenced publications and invited presentations in the field of light and color.

Asha also plays a vital role in educating Architects, Interior Designers and other related lighting professionals through her role as the Educational Chair of the Southwest Region, and as an instructor in the Texas Capitol Section of the Illuminating Engineering Society of North America.



2006-2007 CALENDAR

- 10/18 - LIGHT AND COLOR
- 11/15 - LED TECHNOLOGY
- 12/? - SOCIAL EVENT
- 1/18 - NAOMI MILLER
- 2/21 - ENERGY CODE
- 3/? - ED-150 CLASS
- 4/18 - FIELD TRIP
- 5/23 - CUSTOM FIXTURE TOUR



SECTION OFFICERS & BOARD OF MANAGERS

PRESIDENT: BRENT ANDREWS-512-835-4971

VICE-PRESIDENT: DAVID RIGSBY-512-443-6888

SECRETARY: HERBERT DEAZVEDO-512-835-4971

TREASURER: SHARON BICKFORD-512-475-8427

MANAGERS: KYLE HEMMI-512-372-8778 EXT. 105

DEBORAH FRANKHOUSER-512-346-1386

JENNIFER JAQUES-512-353-3890

Meeting Synopsis

Light, Color and the Aging Eye

Age 40 is considered the demarcation between the young and the old eye. Let's face it, majority of the homes; offices; buildings; restaurants; retail spaces etc. that we design are used by clients who are over 40. This session discusses how normal aging impacts the visual system; and how you the designer/architect can manipulate light and color to compensate for these changes. Focus will be on senior citizens.

Color and Light Psychology

Presentation will also include some general information on color and light Psychology.....implications on mood and behavior.

IIDA Submittal Deadline approaches! Nomination forms, submittal forms and fee must be received by IESNA no later than January 17, 2007. Open the hyperlink below to access more information.

[2007 IIDA Information](#)

More Information on the Aging Eye

The issue of the aging eye will become an increasingly important one over the coming years. The population as a whole is aging; we are getting older. That will require many necessary changes in how we plan for and design our interior and our exterior environment. For example, most lighting research studies have used relatively young subjects. Almost all current recommended lighting levels have been established for young eyes. But eyes age, and many things relative to vision change for the older eye. Lighting levels must be amended, glare becomes much more important, and so on. It is critical to understand these differences and to allow for them.

The average age of the population of the United States continues to increase, as it does worldwide. Life expectancy now approaches 80 years of age in many countries, and the number of people aged 65-85 in the developing countries will increase in the next 35 years by 50 to 90 percent. It is critical that this fact be taken into account in planning for the future. With age, we undergo a natural process that reduces our visual abilities.

Source: Dark Sky Association-Information Sheet #156

To learn more-come to October's meeting!

NCQLP NOTES:

Next test will be held November 4, 2006. The Early application date has passed, the final application deadline is September 20th. Visit www.NCQLP.org for all the details.

AUSTIN-AWARE

Population Growth Comparison: Austin-San Antonio Corridor 1990-2010

The robust growth of the Corridor Counties is expected to continue for the next decade.

The 2010 estimates are based on the percentage of growth that was experienced between 1990 and 2000. Austin-San Marcos MSA (Metropolitan Statistical Area) is comprised of Hays, Travis, Williamson, Caldwell, and Bastrop Counties.

San Antonio MSA is comprised of Bexar, Comal, Guadalupe, and Wilson Counties.

Wilson County is not a part of the Corridor, so it is not included in the Corridor figures.

<u>County</u>	<u>1990</u>	<u>% growth Decade</u>	<u>2000</u>	<u>% growth Decade</u>	<u>2010 Est.</u>
Hays	65,164	48.7%	97,589	48.7%	146,091
Bastrop	38,263	50.9%	57,799	50.9%	87,219
Bexar	1,185,394	17.5%	1,392,931	17.5%	1,636,693
Caldwell	26,392	22.0%	32,194	22.0%	39,267
Comal	51,832	50.5%	78,021	50.5%	117,421
Guadalupe	64,873	37.2%	89,023	37.2%	122,139
Travis	576,407	40.9%	812,280	40.9%	1,144,502
Williamson	139,551	79.1%	249,967	79.1%	447,690
Corridor Total	2,148,326	30.8%	2,809,738	30.8%	3,675,137
Austin-San Marcos MSA	846,227	43.9%	1,217,569	43.9%	1,752,081
San Antonio MSA	1,324,749	20.1%	1,591,373	20.1%	1,911,238

Source: 1990 and 2000 numbers are from the U.S. Census Bureau

The [Annual Street and Area Lighting Conference](#) is happening in Tampa Florida October 8-11, 2006. To find out more information click on this hyperlink: [IESNA-Programs](#)